



**CANTIERE NAVALE  
VITTORIA**

***OPV 748***



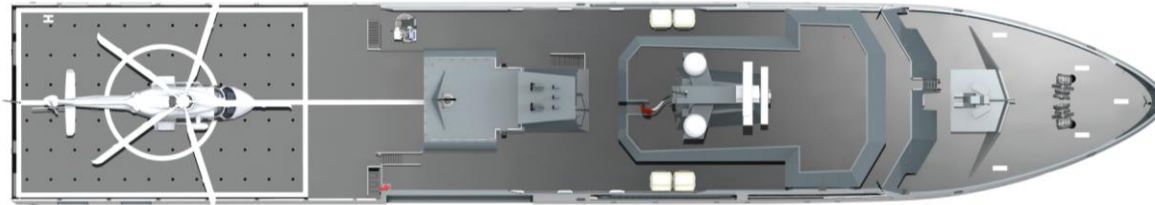




## Vittoria OPV 748 – Offshore Patrol Vessel

Length Over All  
Beam Over All  
Depth  
Full Load Draft

L= 74,8 m  
B= 13 m  
D= 4,5m  
T= 3,7 m



Full Load Displacement  
Max Speed at Full Load  
Maximum Range  
Fuel Oil Tank Capacity  
Crew

**$\Delta$  = 1800 ton**  
**> 20 kn**  
**6000 nm**  
**290 m<sup>3</sup>**  
**44 + 4**

## Main Engine Medium Speed

- Wartsila 16V26, 2 x 5440 kW @1000 rpm

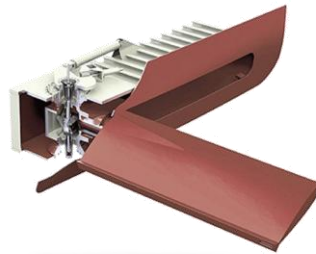


## Gensets Medium Speed

- 3 x Yanmar 750 kW

## Hybrid Propulsion

- 2 electric motors 600 kW each



## Retractable Stabilizer Fins

- Rolls Royce Active Retractable Stabilizer Fins

## Propellers and Rudders

- 2 x CPP D=2300 mm Variable-Pitch Propellers;
- Promas Rudder;

## Tunnel Thruster

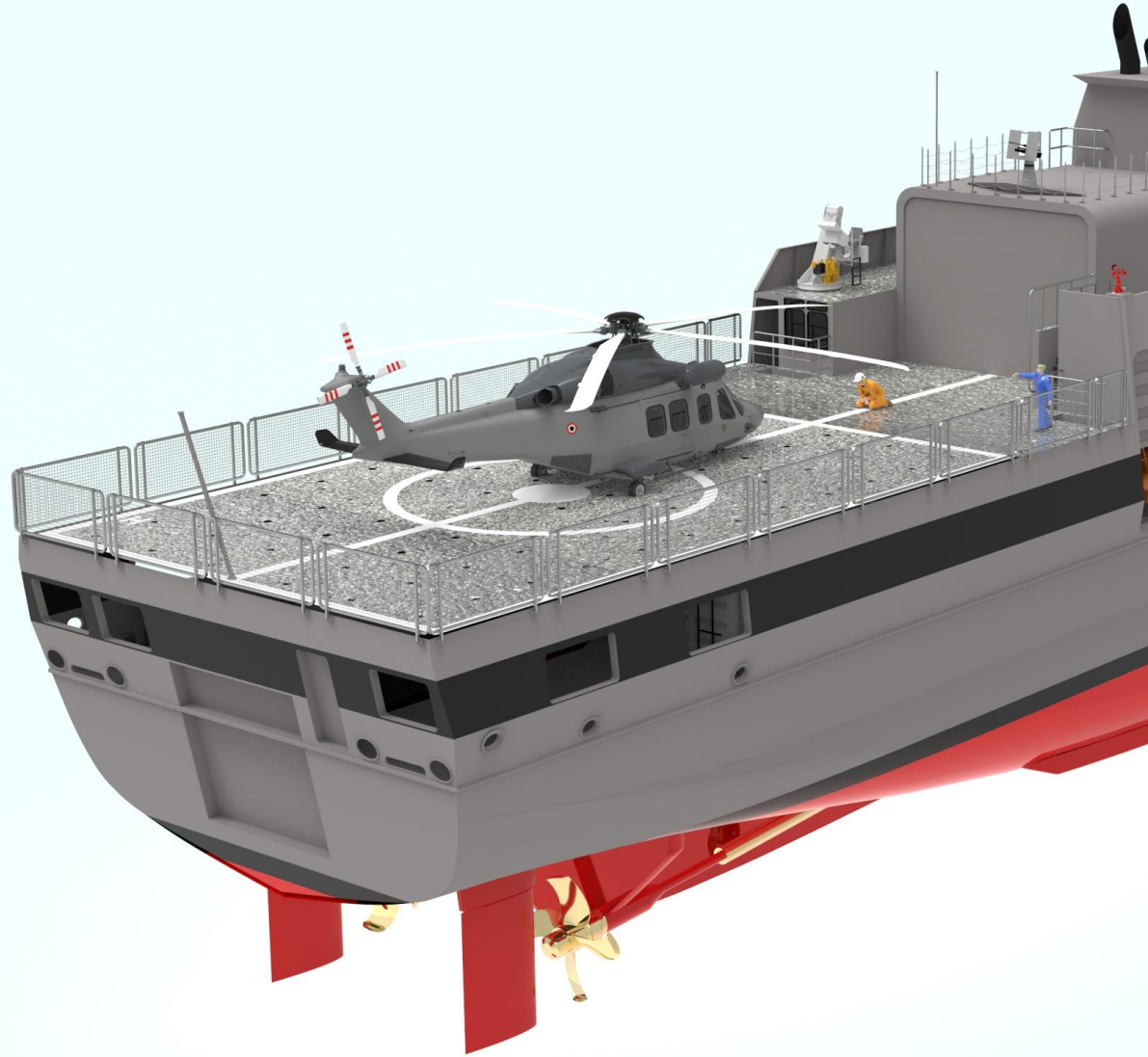
- Bow Thruster Rolls – Royce 445 kW
- Stern Thruster Rolls – Royce 300 kW





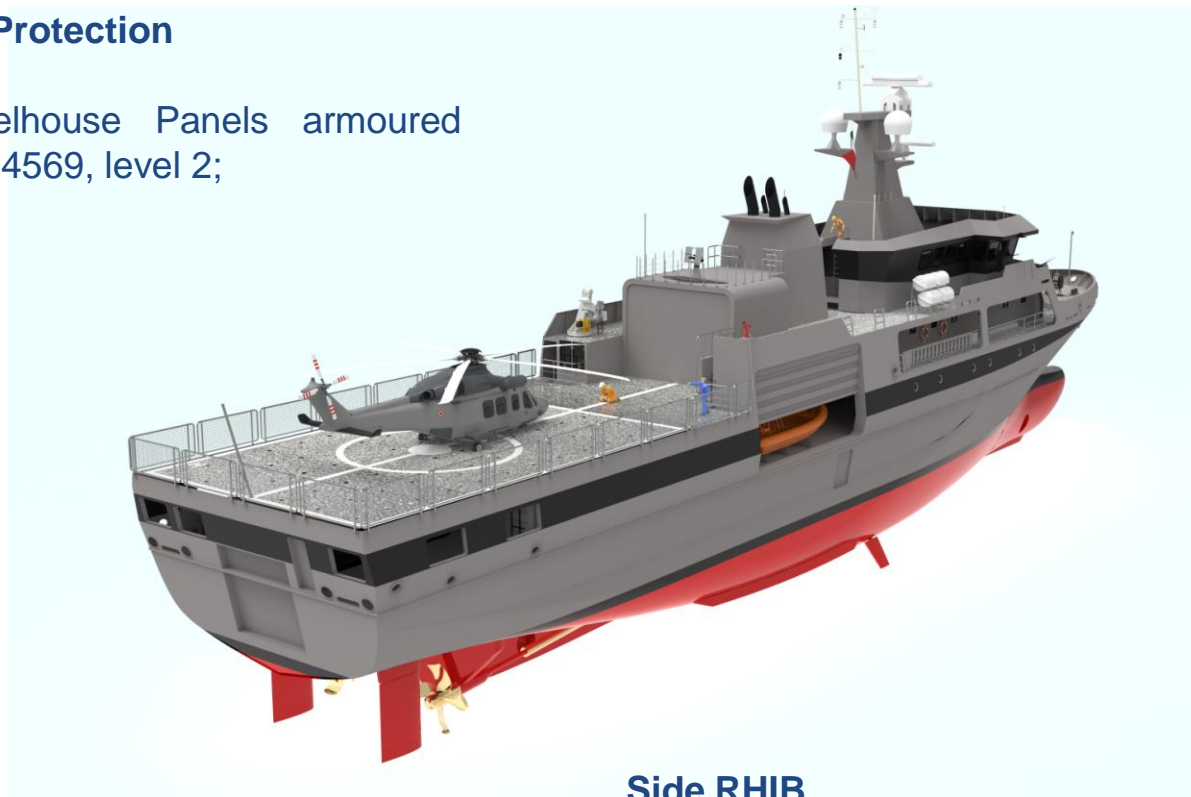
## Helicopter Deck

- Helicopter deck designed for low visibility operations with AW139 and AW109;
- 5000 liters Helicopter Re-fueling System;
- Telescopic Hangar Predisposition;
- Dedicated Electronic systems:
  1. Deck Lights;
  2. Traffic Lights;
  3. Glide Path Slope Indicator;
  4. Radar 2d;
  5. Horizontal Deck Light;
  6. “HMS” monitoring system;
  7. Flight Control Station;



## Wheelhouse Balistic Protection

- Glasses and Wheelhouse Panels armoured according to STANAG 4569, level 2;



## Stern RHIB

- Aluminum RHIB in alluminio, mod MST 9.1 m, 10 pp, 35 kn;
- Aft slide for RHIB launching and recovery in navigation;
- Electro-hydraulic closing hatch;

## Side RHIB

- Aluminum RHIB in alluminio, mod MST 9.1 m, 10 pp, 35 kn;
- Garage equipped with anti-hanging crane for RHIB launching and recovery during navigation;
- Electro closing hatch;















Cantiere Navale Vittoria S.p.A.

Via Leonardo da Vinci, 47 - 45011 Adria (RO) - Italy  
shipyard@vittoria.biz - [www.vittoria.biz](http://www.vittoria.biz)  
Phone: +39 0426 900467 - Fax: +39 0426 41741